

# Paragon Basics Economy Burger 113g

Paragon Basics Economy Burger 113g 48x113g

## PRODUCT DESCRIPTION

Paragon Basics Economy Burger Halal 113g

Manufacturer Product Code	CAT01
Product Type	Food
Product Category	Meatballs, Burgers & Sausages
Storage Type	Frozen
Erudus ID	4e576a30d44c4cadb3db5f66b732d998
Specification Type	Meat

Outer Case GTIN	5060130671353
-----------------	---------------



## INGREDIENTS

**Ingredient Declaration**  
Beef (55%), Beef Heart, Water, Rusk (**Wheat** Flour (**Wheat** Flour, Calcium Carbonate, Iron, Niacin, Thiamin), Salt, Raising Agent (Ammonium Bicarbonate)), Onion, Seasoning (contains Salt, Dextrose, Hydrolysed **Soya** Protein, Preservatives (Sodium **Metabisulphite**, **Sulphur Dioxide**), Natural Flavouring, Acidity Regulator (Citric Acid), Antioxidant (Sodium Ascorbate)), **Soya** Protein, Rework (contains Lamb, Chicken, Red Peppers, Pea Fibre, Flavour Enhancer (Monosodium Glutamate), Onion Powder, Herbs, Spices, Garlic, Chilli Powder, Stabilisers (Diphosphates, Triphosphates, Polyphosphates), Yeast Extract, Sugar, Processing Aid (Rapeseed Oil), Pea Protein, Antioxidant (Trisodium Citrate Dihydrate), Anti-caking Agent (Silicon Dioxide), Acidity Regulator (Acetic Acid), Spirit Vinegar, Colour (Ammonia Caramel)).

## ALLERGENS

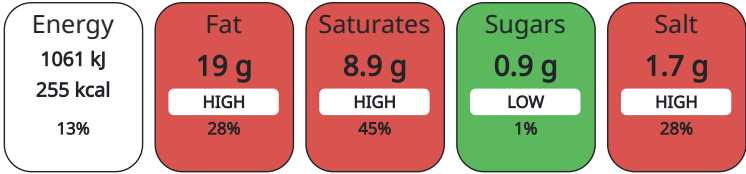
<i>Product Contains:</i>			
Celery/Celeriac	No	Mustard	No
Cereals Containing Gluten	Yes	Nuts (Tree)	No
Barley	No	Almond nuts	No
Oats	No	Brazil nuts	No
Rye	No	Cashew nuts	No
Wheat (including Spelt and Khorasan)	Yes	Hazelnuts	No
Crustacea	No	Macadamia (Queensland) nuts	No
Eggs	No	Pecan nuts	No
Fish	No	Pistachio nuts	No
Lupin	No	Walnuts	No
Milk	No	Peanuts	No
Molluscs	No	Sesame Seeds	No
		Soybeans	Yes
		Sulphur Dioxide and Sulphites	Yes

**Allergen Statement On Pack**  
For allergens, including cereals containing gluten, see ingredients in bold.

DIET SUITABILITY	Halal Diet	Suitable for	Kosher Diet	No
------------------	------------	--------------	-------------	----

NUTRITIONAL  
INFORMATION AS  
SOLD

Each 100g/ml portion contains:



of your reference intake.

Typical values per 100g/ml : Energy 255kcal / 1061kJ

Nutrient	per 100g	RI per 100g	per 113g serving	RI per 113g serving
Energy (kJ)	1061 kJ	13%	1198.93	14%
Energy (kcal)	255 kcal	13%	288.15	14%
Fat	19.4 g	28%	21.92 g	31%
of which Saturates	8.9 g	45%	10.06 g	50%
Carbohydrate	7.1 g	3%	8.02 g	3%
of which Sugars	0.9 g	1%	1.02 g	1%
Fibre	0 g		0 g	
Protein	13.1 g	26%	14.8 g	30%
Salt	1.7 g	28%	1.92 g	32%
Sodium	700 mg		791 mg	

Serving Size113 g

HANDLING &  
STORAGE  
INFORMATION

**Directions For Use**  
Suitable for cooking from frozen or defrost on a Chargrill, Grill, Griddle, in an Oven or for Shallow Frying. Turn occasionally to achieve a core temperature of at least 75°C until the juices run clear and no internal pink colour remains.

**Storage Instructions**  
Store at -18 degrees Celsius or below.

ORIGIN

**Product Country of Origin**United Kingdom

**Additional Origin Details**  
Produced in the UK with beef from non-UK countries.

CONTACT  
INFORMATION

**Origin of the Primary Ingredient**

<b>Address</b> Paragon Quality Foods Quadrant 3, Yorkshire Way West Moor Park, Armthorpe DN3 3FB Doncaster South Yorkshire England  technicalteam@paragonmail.co.uk 01302 83 41 41	<b>Technical</b> Maggie Crawford maggie@paragonqualityfoods.com 01302 834141 Compliance Manager  <b>Complaints</b> Cagla Pekin technicalteam@paragonmail.co.uk 01302 834141 Assistant Technical Manager
--	---

The information on the [Erudus System](#) has been supplied by the manufacturers of the products and, whilst the owners of the Erudus System take steps to ensure the information is regularly updated, they give no warranty and no guarantee that the information is accurate. Product information and ingredients may change, please always read product labels carefully in addition to using the information provided by Erudus.

We do not accept liability for any inaccuracies or incorrect information contained on this site.  
Please visit <http://www.erudus.com/terms-and-conditions> for full terms and conditions.